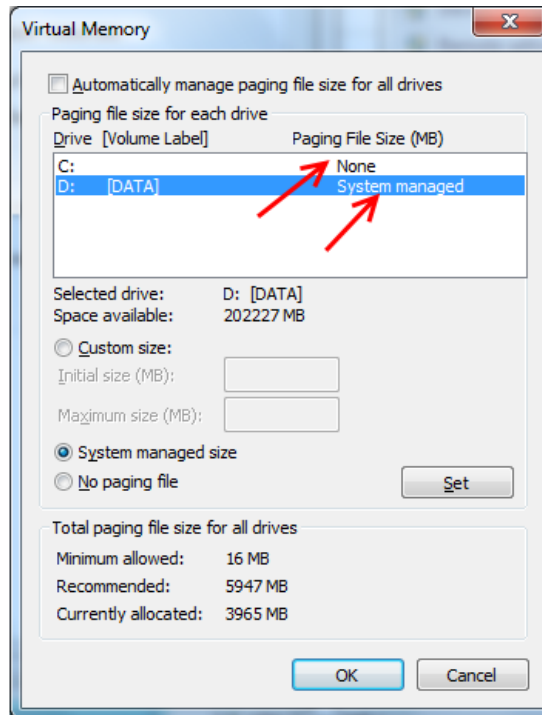


Before installing Magic Card recommended the following changes:

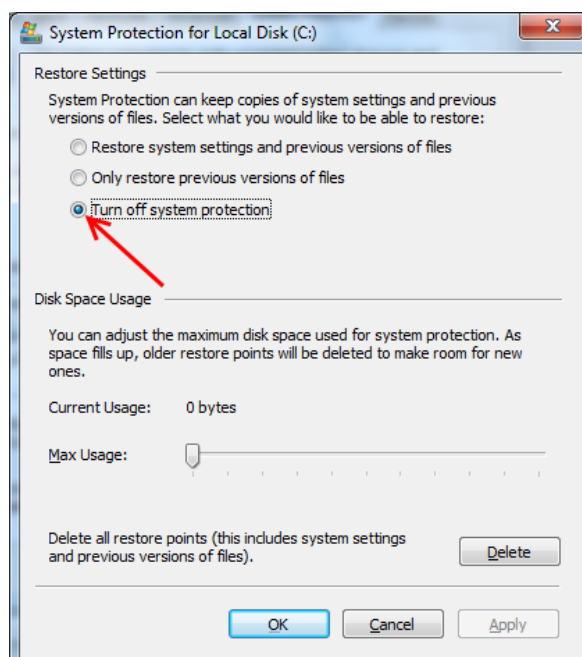
1. Move virtual memory to unprotected hard drive:

Right click on My Computer -> Properties -> Advanced system settings -> Advanced -> Performance -> Settings -> Advanced -> Change->



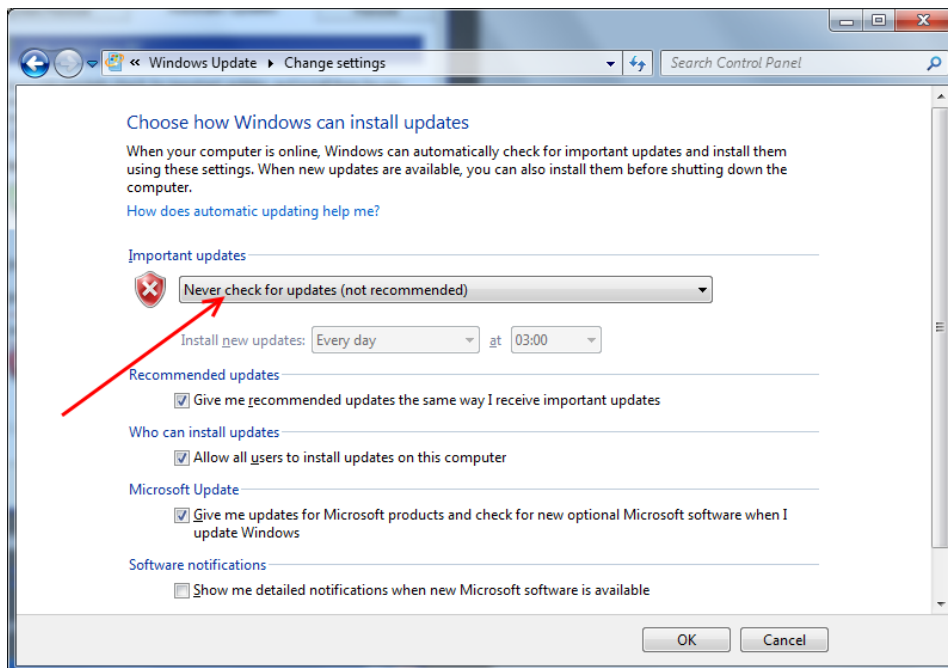
2. Disable System Protection

Right click on My Computer -> Properties -> System Protection -> Configure ->



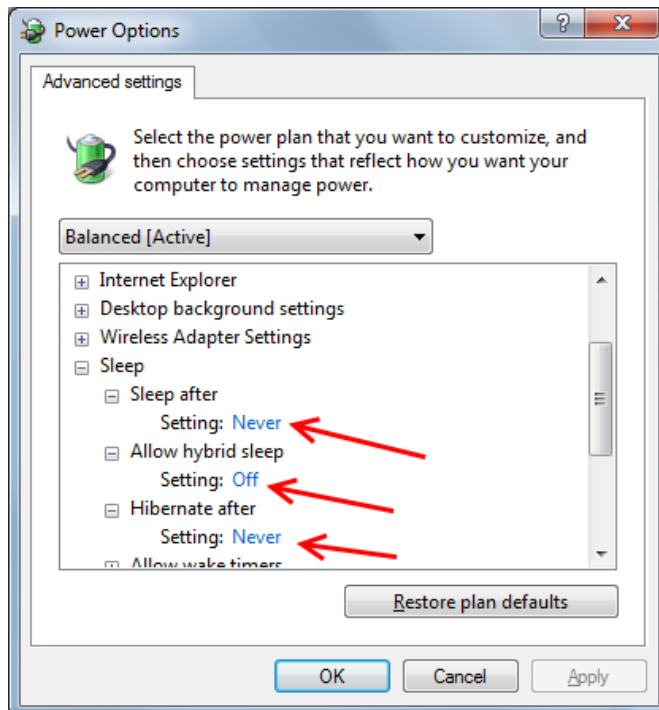
3. Disable Windows Updates

Control Panel -> Windows Update -> Change settings ->



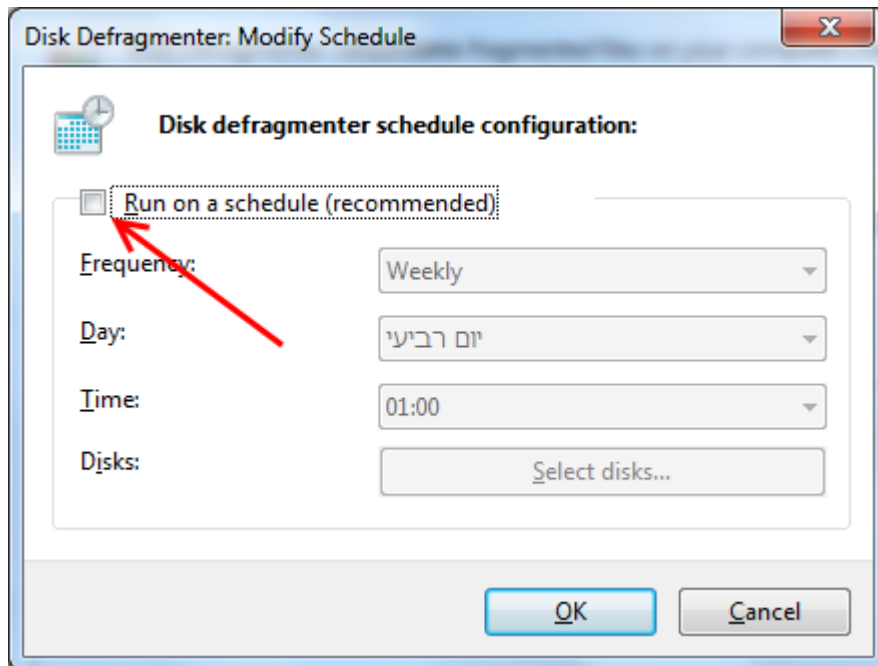
4. Disable Sleep and Hibernation

Control panel -> Power options -> Balanced -> Change plan settings ->
Change advanced power settings ->



5. Disable hard disk defragment schedule

Computer -> Right click on disk C -> Tools -> Defragment now -> Configure schedule -> Disable "Run on a schedule"



6. Defragment all disks

Computer -> Right click on disk C -> Tools -> Defragment now -> Select disk -> Defragment disk (perform it for all partitions) ->

